

# Product Specification.

## Laminam

## LAMINAM

SIZES: **1620x3240 mm FULL SIZE**

THICKNESS: **12+**

### ISO 13006:2018 - Dry Pressed Porcelain Tiles with low water absorption (EV ≤ 0,5%) UGL

lastre di grés porcellanato pressato a secco e con basso assorbimento d'acqua / plaques de grés cérame pressées à sec à faible absorption d'eau / tablas de grés porcelánico prensado en seco con baja absorción de agua / trockengepresste feinsteinzeugplatten mit geringer wasseraufnahme

TECHNICAL CHARACTERISTICS caratteristiche tecniche / caractéristiques techniques / características técnicas / technische merkmale		MEASUREMENT METHOD norma-metodo / norme-méthode d'essai / norma-método de ensayo / standard-methode	LAMINAM AVERAGE VALUE * valore medio / valeur moyenne / valor medio / durchschnittswert
DIMENSIONS AND SURFACE dimensioni e superficie / dimensions et surface / dimensiones y superficie / abmessungen und flächinhalt	<b>Length and Width (Full Size)</b> lunghezza e larghezza (non rettificato) / longueur et largeur (non rectifiée) / longitud y anchura (no rectificado) / länge und breite (nicht berichtigt)	LAMINAM	≥ 1630x3250 mm minimum size dimensione minima / taille minimale / tamaño mínimo / mindestgröße
	<b>Planarity</b> planarità / planéité / planitud / Ebenheit	LAMINAM	<b>2 mm</b> maximum value respect to a horizontal and stable plane (rispetto un piano orizzontale e stabile / rapport à un plan horizontal et stable / respecto a un plano horizontal y estable / in bezug auf eine horizontale und stabile ebene)
	<b>Surface Quality</b> qualità superficie / qualité surface / calidad de la superficie / oberflächenqualität	ISO 10545-2	> 95% pieces with no visible flaws pezzi esenti da difetti / de pièces exemptes de défaut / unidades sin defectos / fehlerfreie Teile
PHYSICAL PROPERTIES proprietà fisiche / propiedades físicas / physikalische Eigenschaften	<b>Weight</b> peso / poids / peso / gewicht	LAMINAM	<b>30 Kg/m<sup>2</sup></b>
	<b>Density</b> densità / densité / densidad / dichte	ISO 10545-3	<b>2200 Kg/m<sup>3</sup></b> minimum value valore minimo / valeur minimale / valor mínimo / mindestwert
	<b>Water Absorption</b> assorbimento acqua / absorption d'eau / absorción de agua / wasseraufnahme	ISO 10545-3	<b>E ≤ 0.1% Bia</b>
	<b>Modulus of Rupture (R)</b> modulo di rottura / module de rupture / módulo de rotura / bruchfestigkeit	ISO 10545-4	<b>50 N/mm<sup>2</sup></b> (samples 400x800 mm) (campioni dimensioni 400x800 mm) / (échantillons dimensions 400x800 mm) / (muestras de tamaño 400x800 mm) / (mustergröße 400x800 mm)
	<b>Breaking Strength (S)</b> resistenza alla flessione / force de flexion / resistencia a la flexión / biegefestigkeit	ISO 10545-4	<b>&gt; 4000 N</b> (samples 400x800 mm) (campioni dimensioni 400x800 mm) / (échantillons dimensions 400x800 mm) / (muestras de tamaño 400x800 mm) / (mustergröße 400x800 mm)
	<b>Deep Abrasion Resistance</b> resistenza all'abrasione profonda / résistance à l'abrasion profonde / resistencia a la abrasión profunda / tiefenabriebfestigkeit	ISO 10545-6	<b>≤ 175 mm<sup>3</sup></b>
	<b>Coefficient of Linear Thermal Expansion</b> coefficiente di dilatazione termica lineare / coefficient de dilatation thermique linéique / coeficiente de dilatación térmica lineal / linearer thermischer ausdehnungskoeffizient	ISO 10545-8	<b>6,6x10<sup>-6</sup> °C<sup>-1</sup></b>
	<b>Thermal Shock Resistance</b> resistenza agli sbalzi termici / résistance aux chocs thermiques / resistencia a las oscilaciones térmicas / temperaturwechselbeständigkeit	ISO 10545-9	<b>RESISTANT</b> resiste / resistant / résistant / resistente / beständig
	<b>Frost Resistance</b> resistenza al gelo / résistance au gel-dégel / resistencia a los ciclos di hielo-deshielo / frostbeständigkeit	ISO 10545-12	<b>RESISTANT</b> resiste / resistant / résistant / resistente / beständig
<b>Colour Resistance to Light Exposure</b> resistenza dei colori alla luce / résistance des couleurs à la lumière / resistencia de los colores a la luz / lichtbeständigkeit der farben	DIN 51094	<b>RESISTANT</b> resiste / resistant / résistant / resistente / beständig	

LAMINAM.COM



TECHNICAL CHARACTERISTICS caratteristiche tecniche / caractéristiques techniques / características técnicas / technische merkmale		MEASUREMENT METHOD norma-metodo / norme-méthode d'essai / norma-método de ensayo / standard-methode	LAMINAM AVERAGE VALUE * valore medio / valeur moyenne / valor medio / durchschnittswert
CHEMICAL PROPERTIES proprietà chimiche / propriétés chimiques / propiedades químicas / chemische Eigenschaften	<b>Resistance to Household Chemicals and Swimmingpool Salts</b> resistenza ai prodotti chimici di uso domestico e sali per piscina / résistance aux produits chimiques ménagers et aux sels de piscine / resistencia a los productos químicos domésticos y sales de piscina / beständigkeit gegen haushaltschemikalien und poolsalze	ISO 10545-13	A
	<b>Resistance to Acids and Bases **</b> resistenza agli acidi ed alle basi / résistance aux acides et bases / resistencia a ácidos y bases / beständigkeit gegen säuren und basen	ISO 10545-13	<b>Min LB ; Min HB (for A Spacco, Bocciardato, Caress, Natural, Fiammato, Soft-Touch, Textured)</b> <b>Min LC ; Min HC (for Polished)</b>
	<b>Resistance to Staining</b> resistenza alle macchie / résistance aux taches / resistencia a las manchas / fleckenbeständigkeit	ISO 10545-14	<b>Min Class 4</b>

\* Values related to the ceramic part only, except for weight and reaction to fire that relate to the product with fiberglass  
valori riferiti alla sola componente ceramica ad eccezione del peso e della reazione al fuoco che sono riferiti al prodotto stuoiato / les valeurs se rapportent uniquement au composant céramique, à l'exception du poids et de la réaction au feu qui se rapportent au produit mat / los valores se refieren únicamente al componente cerámico, excepto el peso y la reacción al fuego que se refieren al producto mate / werte beziehen sich nur auf die keramische komponente, mit ausnahme des gewichts und des brandverhaltens, die sich auf das matte produkt beziehen

\*\* The reference standard does not certify the use of hydrofluoric acid or compounds containing it  
il metodo di prova non certifica la resistenza all'acido fluoridrico o prodotti che lo contengono / la méthode d'essai ne certifie pas la résistance à l'acide fluorhydrique ou aux produits qui en contiennent / el método de ensayo no certifica la resistencia al ácido fluorhídrico o a productos que lo contengan / die prüfmethode bescheinigt nicht die beständigkeit gegen flusssäure oder flusssäurehaltige produkte



# Maintenance and cleaning guide AU

03. 2024

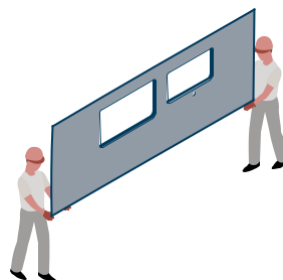
# 1 | Handling and installation of the top

During handling, transport and installation of the finished top the greatest care should be taken to prevent any undue bending and twisting or impacts, especially on the edges.

## 1.1 Handling

After opening the wooden crate or frame in which it was delivered, handle the Laminam top keeping it in a vertical position and with any openings upward.

Never hold it by the openings, in order to avoid cracks or breaks caused by irregular twisting due to incorrect handling. If the top includes a preassembled basin, always support the weight of the basin to prevent it from causing the top to twist.

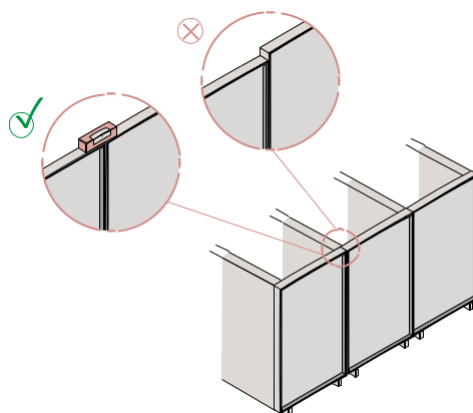


## 1.2 Installation

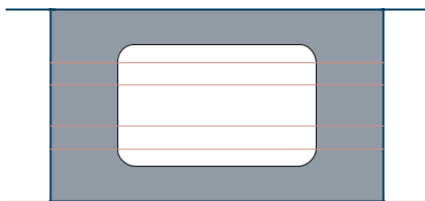
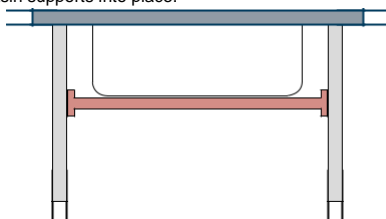
Check that the bases of the kitchen unit are perfectly level and fixed together. This is important as they must provide even support for the top. Where the bases do not provide perimeter support for the top, support of an adequate size and material to bear the weight of the top in use must be added between them. This reinforcement should be implemented even when there is a 45° join between two sections of the top.

To prevent any damage during installation, when handling the top it is recommended to support the lower part with a wood panel until it is placed on its base/uprights. If the top includes an integrated basin, particular care should be taken when it is positioned horizontally ready to be placed onto the kitchen unit base.

The weight of the basin should always be supported until the top is securely fitted, making sure that the kitchen units have the required perimeter support and immediately putting the basin supports into place.



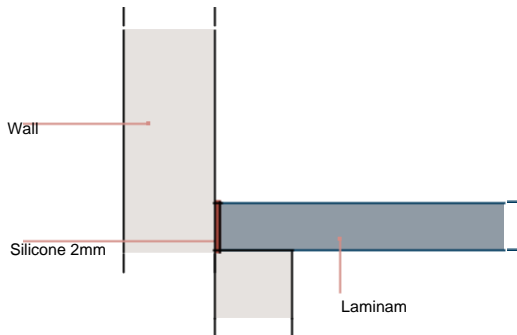
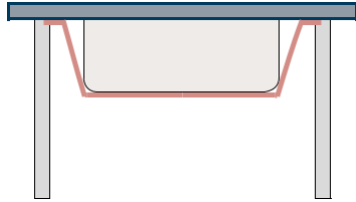
Hold together with a screw or clamp



If the unit has sliding drawers, the supports must be appropriately shaped, to ensure the drawers can slide freely.

If the top has a special shape, or the unit or base cannot provide adequate support, a board, usually in wood, can be placed on or between them to ensure an even, uniform surface for the top.

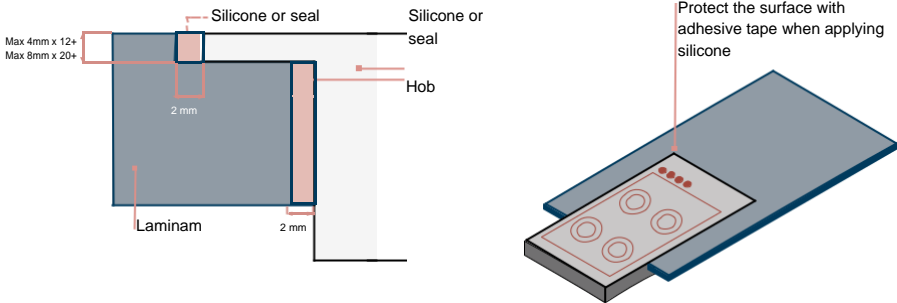
When installing the top, it is recommended to leave a gap of 2-3 mm from the wall and to fill it with silicone, making sure it is evenly spread.



Use plastic film or adhesive rubber tape to protect the adjacent surface when applying the silicone. If the top consists of several sections, care should be taken when positioning them to avoid knocking the exposed edges. This operation can be facilitated by inserting spacers, to be removed once the slabs are in place. Join the two sections using silicone products, or clear or coloured adhesives, taking care to remove any residue after application.

When installing the basin, the edges should be sealed with silicone, adhesive seal or similar to ensure water tightness and to avoid the build-up of dirt. Depending on the type of basin to be installed, proceed with the mounting system provided by the manufacturer consisting of mechanical and/or adhesive fixing. Prepare two support bars or a similar system for supporting the sink to be mounted on the furniture unit, so that the top is not bearing the weight of the sink itself and the water it contains.

Installation of the hob must be centred within the opening provided, making sure to maintain an expansion gap.



### 1.3 Cleaning after installation

Remove any residue of the silicone used for installation and for sealing appliances with a thinner and a soft sponge. Remove any cement-based residues left by work carried out on the back with an acidic product and a soft sponge.

Preliminary cleaning to sanitise the top before using it for the first time should be carried out by leaving an alkaline detergent to act for around 5/10 minutes. Proceed with a mechanical action using a soft, non-abrasive sponge, rinse with plenty of water, and dry the surface with a microfibre cloth.

This operation helps to eliminate any organic residues on the surface as a result of production, manufacture and installation of the top.

## 2.0 | Cleaning, use and maintenance

The natural origin and production process of Laminam slabs mean they have almost no surface porosity, making them easy to clean and suitable for use as a kitchen countertop and as table tops.

The same process makes the product hard and compact: during everyday use avoid knocks which could chip the top especially in more delicate areas such as corners, edges, integrated basins etc. Do not subject the top to improper use and avoid overloading it, for example by climbing on it, which may cause it to break, especially in vulnerable areas which have less support such as basins and hobs.

To clean Laminam surfaces, use warm water and, if necessary, mild detergents commonly used to clean kitchen countertops and appliances, with a microfibre cloth or soft sponge. If correctly maintained, the Laminam top will not require any special cleaning.

Note that in general stains are more easily removed the sooner they are dealt with. If left for a long time on the surfaces, some residues may require the use of a specific detergent. The choice of this detergent will depend on the type of stain: for food residues, use alkaline detergents (products with a higher pH such as ammonia or bleach), for inorganic residues, use acidic detergents (such as descaler) and for oily residues, use degreasers. Rinse the surface after using cleaning products to prevent the formation of streaks or films on the surface.

## 2.1 | Cleaning Silicon Elements

- Remove raised silicon residue with a plastic spatula
- Apply specific products to the surface for removing silicone, such as Filazero Sil (or something similar)
- Let sit for 15-20 minutes ensuring product covers entire area of concern
- Rub softly with a blue or white 3M Scotch Brite sponge
- Rinse with clean water and sponge
- Dry with microfibre towel/cloth
- For light ring marks, use a universal de greaser and let sit for 5 mins
- Repeat steps if necessary

## 2.2 | Cleaning Waxed Based Elements

- Remove raised wax residue with a plastic spatula
- Apply an alkaline product such as Faber Wax Remover (or something similar)
- Let sit for 10 minutes ensuring area of concern is covered
- Rub softly with a blue or white 3M Scotch Brite sponge
- Rinse with clean water and sponge
- Dry with microfibre towel/cloth
- Repeat if necessary

## 2.3 | Cleaning Limescale Elements

- Apply a commercial lime stain remover (which does NOT contain Hydrofluoric Acid) to the surface
- Let sit for 5 minutes
- Rub softly with a blue or white 3M Scotch Brite sponge
- Rinse with clean water and sponge
- Dry with microfibre towel/cloth
- Repeat if necessary



## 2.4 | Cleaning Food Stain Elements

- For fresh stains, run with a (wet) microfibre towel/cloth
- For dry stains, pour a universal degreaser on the surface
- Let it sit for 5 minutes
- Rub delicately with a microfibre towel/cloth
- Rinse with clean water and sponge then dry
- If stains persist on Luciadato surfaces, apply a commercial cleanser that contains bleach
- Leave for up to 5 minutes

## 2.5 | Cleaning Epoxy Adhesive Elements

- Apply specific products to remove epoxy adhesives, such as Fila CR10, Faber Epoxy Remover or something similar
- Let sit for at least 20-25 minutes ensuring area of concern is covered
- Remove raised filler residue with plastic spatula
- Apply product again to rings of the remaining adhesive
- Let sit for 15-20 minutes
- Rub softly with a blue or white 3M Scotch Brite sponge
- Rinse with clean water and sponge
- For light rings use a universal degreaser
- Let sit for 5 minutes
- Remove rings with microfibre cloth/towel
- Rinse with damp cloth and dry

## 2.6 | Cleaning Air Suckers from Laminam Slabs

- Apply alkaline products such as Fila PS87, Faber Alkaline Cleaner or something similar
- Let sit for 5-10 minutes ensuring area of concern is covered
- Rub softly with a blue or white 3M Scotch Brite sponge
- Rinse with clean water and sponge
- Dry
- Repeat if necessary

Staining agent	Everyday cleaning	Specific detergent for any stubborn residue
Wine	Warm water and mild detergent	Alkaline*
Ice-cream, Coffee, Tea, Tomato, Balsamic vinegar, Lemon, Coca-Cola, Beer, Milk, Fruit juice, Jam, Nicotine	Warm water and mild detergent	Alkaline*
Oil, Butter, Greasy and oily substances, Wax	Warm water and mild detergent	Degreaser
Rust, Limescale, Metal marks, Concrete residue, Plaster	Warm water and mild detergent	Acid
Nail polish	Warm water and mild detergent	Solvent

\* If using bleach (alkaline detergent), dampen a soft cloth and rub the surface for a few seconds. Most of the stain will already no longer be visible 2/3 minutes after application. Alternatively, it can be poured directly onto the surface. Leave on polished surfaces for no longer than 10 minutes, without letting it dry. Repeat the operation until the stain is gone, taking care to rinse after every application.

## Prescriptions

- Do not use fluorhydric acid or products containing it.
- Do not use abrasive sponges or metal wool.
- Always avoid cleaning agents containing abrasive particles on the Lucidate (polished)/Soft Touch surfaces.
- To remove stubborn stains, when using mildly abrasive products that cannot, however, be used on Lucidate (polished)/Soft Touch surfaces, ensure that the pressure applied does not have a polishing effect on the treated area.
- Do not use products that contain wax or polishes.
- When they are not promptly removed, staining agents might leave stains that are not entirely removable on the Lucidate (polished) surfaces.
- Metal objects, such as cutlery, saucepans and knives, might cause surface scratches on Lucidate (polished)/Soft Touch surfaces. Use trivets and cutting boards when preparing food.
- Avoid dragging/using objects with a hardness equal to or greater than ceramic on all surfaces as this could cause permanent scratches (e.g. ceramic knives, diamond tools, etc...).
- Laminam surfaces, with the exception of the Lucidate (polished)/Soft Touch ones, do not fear scratches caused by metal objects and cutlery. Having a lower degree of hardness, in case of rubbing, they might leave metal residue on the countertop. Such residue, which shall not be considered surface defects, might be hard to completely remove. They might be more evident on products with a black background.
- Avoid direct contact with the flame.



[naturalstonetiles.com.au](http://naturalstonetiles.com.au)

Richmond

(03) 9121 8888

591 Bridge Rd, Richmond

Hoppers Crossing

(03) 9748 7788

6 Nevada Crt, Hoppers Crossing

Geelong

(03) 5261 7777

327 Shannon Ave, Newtown